

MAP # 1



Switch to racing canoe Mile 15

WISCONSIN RIVER CENTENNIAL TRAIL



MAP #1 – Lac Vieux Desert Dam to River Rd

➤ **General Description**

- Miles 000 – 005 (Lac Vieux Desert dam to USH 45) Upper 2 miles are narrow but passable, typically encounter beaver dams and deadfalls
- Miles 005 – 013 (USH 45 to Rummels Rd) Velocity picks up but the stream twists & turns, may need to walk your canoe through a long stretch of low hazard rapids upstream of Portage Creek
- Miles 013 – 019 (Rummels Rd to Vilas County K) Flow increases & river becomes wider
- Miles 019 – 025 (Vilas County K to River Rd landing) Floodplain broadens and terrain becomes increasingly marshy with occasional oxbows, current remains moderately fast

Mile #	Landmark	Approximate hrs* from previous landmark
000	Lac Vieux Desert dam	
005	USH 45 bridge	3
013	Rummels Rd bridge	4
015	Heart Lake Rd access	1
019	County K bridge	1½
025	River Rd landing	2

*Times vary depending on weather, river flow, and ability

➤ **Portages** (see portage maps by clicking on the dam symbol)

- Mile 000 – Lac Vieux Desert dam – Short 100' portage around dam
 - 3' diameter culvert on West Shore Rd (about 200 yd downstream of the dam) portage across road
- Mile 000-002 Some beaver dams may need to be portaged

➤ **Landings suitable for take-out or put-in**

- Mile 000 Access to Lac Vieux Desert and tailwater at the dam portage
- Mile 005 USH 45 boat landing downstream of the bridge (left)
- Mile 013 Rummels Rd landing between vehicle & snowmobile bridges (left)
- Mile 015 Heart Lake Rd undeveloped access (right)
- Mile 019 Boat landing at County K upstream of the bridge (left)
- Mile 025 River Rd landing (left)

Switch to racing canoe

➤ **Camping**

- USFS Campground on west shore of Lac Vieux Desert with 31 sites
- Mile 013 Vilas County – canoe campsite at Rummels Rd with shelter & toilet (left)
- Mile 023 Vilas County – canoe campsite at Bucktabon Creek with shelter & toilet (left bank of Buckatabon Creek on the right side of the river)
- Mile 025 Vilas County – canoe campsite below River Rd with several tables & toilet (left) (Vilas County canoe campsites require a nominal fee for a 24 hr period when traveling by watercraft, all have a picnic table & fire ring, some have toilets provided but no water)

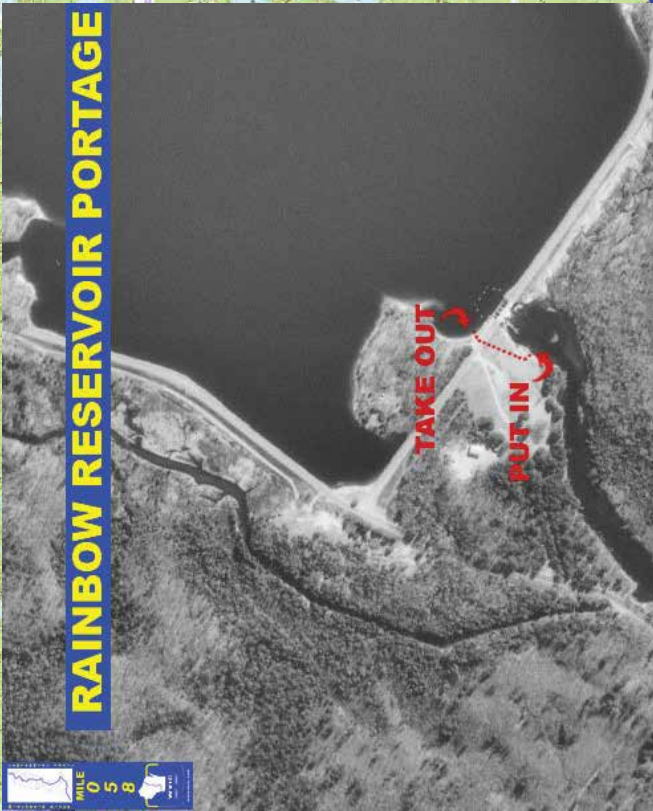
➤ **Other amenities**

- Mile 000 – Lac Vieux Desert Park with water, picnic area, & restrooms at the dam
- Mile 005 – Historical marker & wayside with restroom & picnic tables adjoin landing (left)
- Mile 012 – Rohr's Wilderness Tours & private landing (left) www.rwtcanoe.com
- Mile 019 – Conover ½ mile east on County K (left) www.conoverwisconsin.info

- **Flow Information** - None available, however trip accounts reveal that if the staff gage in Lac Vieux Desert tailwater reads 0.6' the water is just deep enough to float a canoe.

MAP # 2

RAINBOW RESERVOIR PORTAGE



MILE 035

MILE 041

MILE 045

MILE 046

MILE 047

MILE 048

OTTER RAPIDS PORTAGE

MILE 041

MILE 058

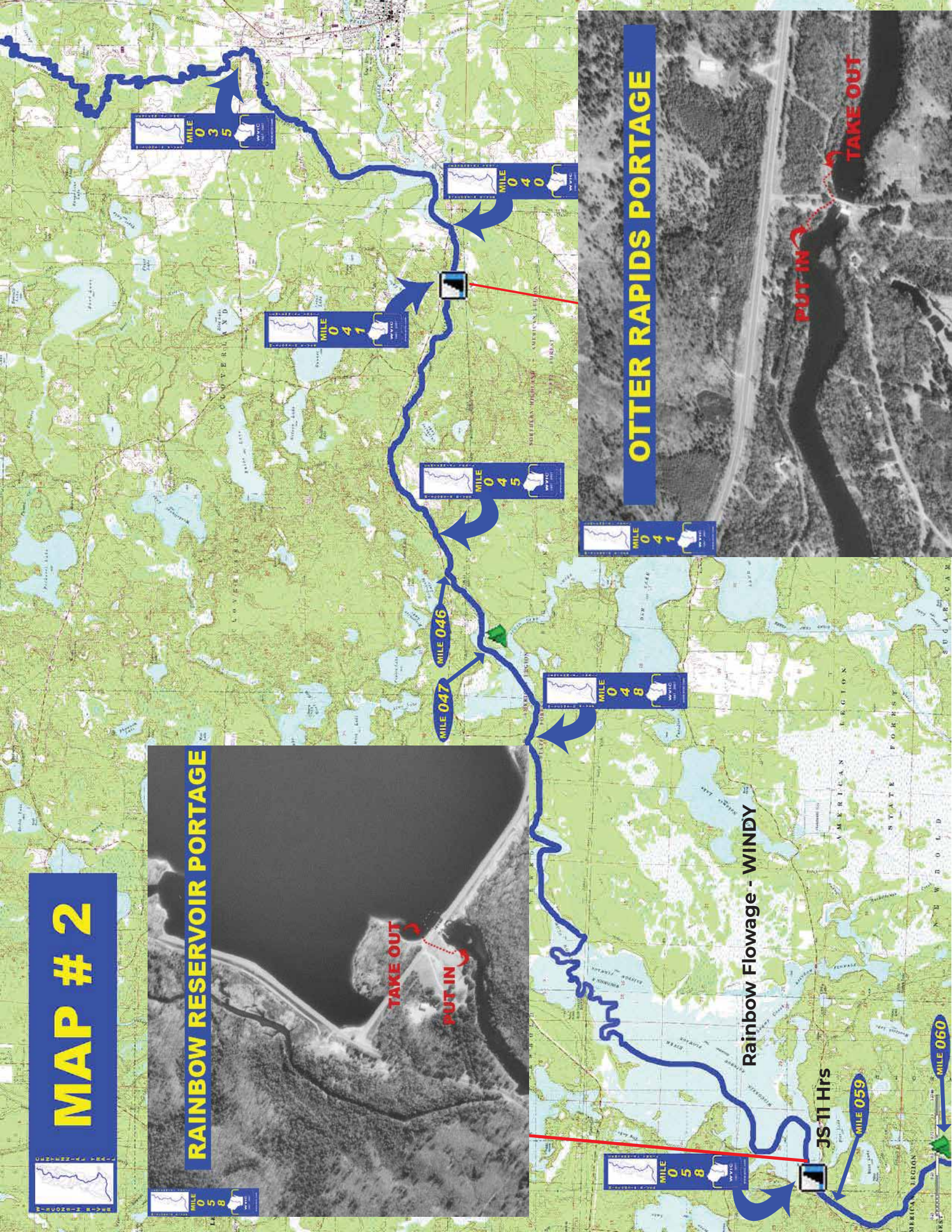
JS 11 Hrs

MILE 059

MILE 060

Rainbow Flowage - WINDY

PUT IN TAKE OUT



WISCONSIN RIVER CENTENNIAL TRAIL



MAP #2 – River Rd to Rainbow Dam

➤ **General Description**

- Miles 025 – 035 (River Rd landing to Vilas County G) River continues through marshy lowlands, be on guard for deadfall
- Miles 035 – 040 (Vilas County G to STH 70) Little current, heavy boat traffic through Watersmeet Lake where the Eagle River and other tributaries enter
- Miles 040 – 041 (STH 70 to Otter Rapids dam) Gently meandering, easy to canoe
- Miles 041 – 048 (Otter Rapids dam to Oneida County O) Tailwater area is fast with many boulders, narrow river channel through wooded uplands and marshy lowlands to beginning of flowage above O Bridge
- Miles 048 – 058 (Rainbow Reservoir) Winds can make crossing the 4,165 acre reservoir very difficult

Mile #	Landmark	Approximate hrs* from previous landmark
025	River Rd landing	
035	County G bridge	3¾
040	STH 70 bridge	1¾
041	Otter Rapids dam	½
048	County O bridge	3
058	Rainbow dam	4

*Times vary depending on weather, river flow, and ability

➤ **Portages** (see portage maps by clicking on the dam symbol)

- Mile 041 Otter Rapids dam – Short 500' portage (right)
- Mile 058 Rainbow dam – Short 450' portage, steps provided at both ends (right)

➤ **Landings suitable for take-out or put-in**

- Mile 035 County G public boat landing downstream of the bridge (left)
- Mile 041 Otter Rapids Hydro off STH 70 gives access to the portage route (right)
- Mile 046 Unimproved access right side off STH 70
- Mile 048 County O public boat landing upstream of the vehicle & snowmobile bridges with parking available (right)

- JS 11 Hrs** ● Mile 058 Rainbow Reservoir boat landing and tailwater access has parking available at both facilities although no overnight parking is allowed (right)
- Mile 059 WDNR County D boat landing provides access just below the Rainbow Dam with parking available (right)

➤ **Camping**

- Mile 047 WDNR – canoe campsite 41 at confluence with Sugar Camp Creek (left)
- Miles 048-058 No camping allowed on the Rainbow Reservoir WVIC or WDNR property
- Mile 060 WDNR – canoe campsite at Rainbow Rapids (left)

➤ **Other amenities**

- Mile 035 – Small park at County G Landing with boat landing, tables & restroom (left)
- Mile 039 – Eagle River 1 mile east from Watersmeet Lake (left) www.eagleriver.org
- Mile 045 – Hawks Nest Canoe Outfitters (right) www.hawksnestcanoe.com
- Mile 058 – WVIC Rainbow Dam Recreation Area with boat landing, picnic tables, fishing area, canoe portage & restrooms (right)

- ### ➤ **Flow Information** – For information on river flow below Otter Rapids go to “Links” on the home page of this website and under “River Flow Data from Wisconsin Public Service” select “Hydroelectric Plant Water Levels and River Flows” to get levels & flows for WPSC hydros.

MAP # 3

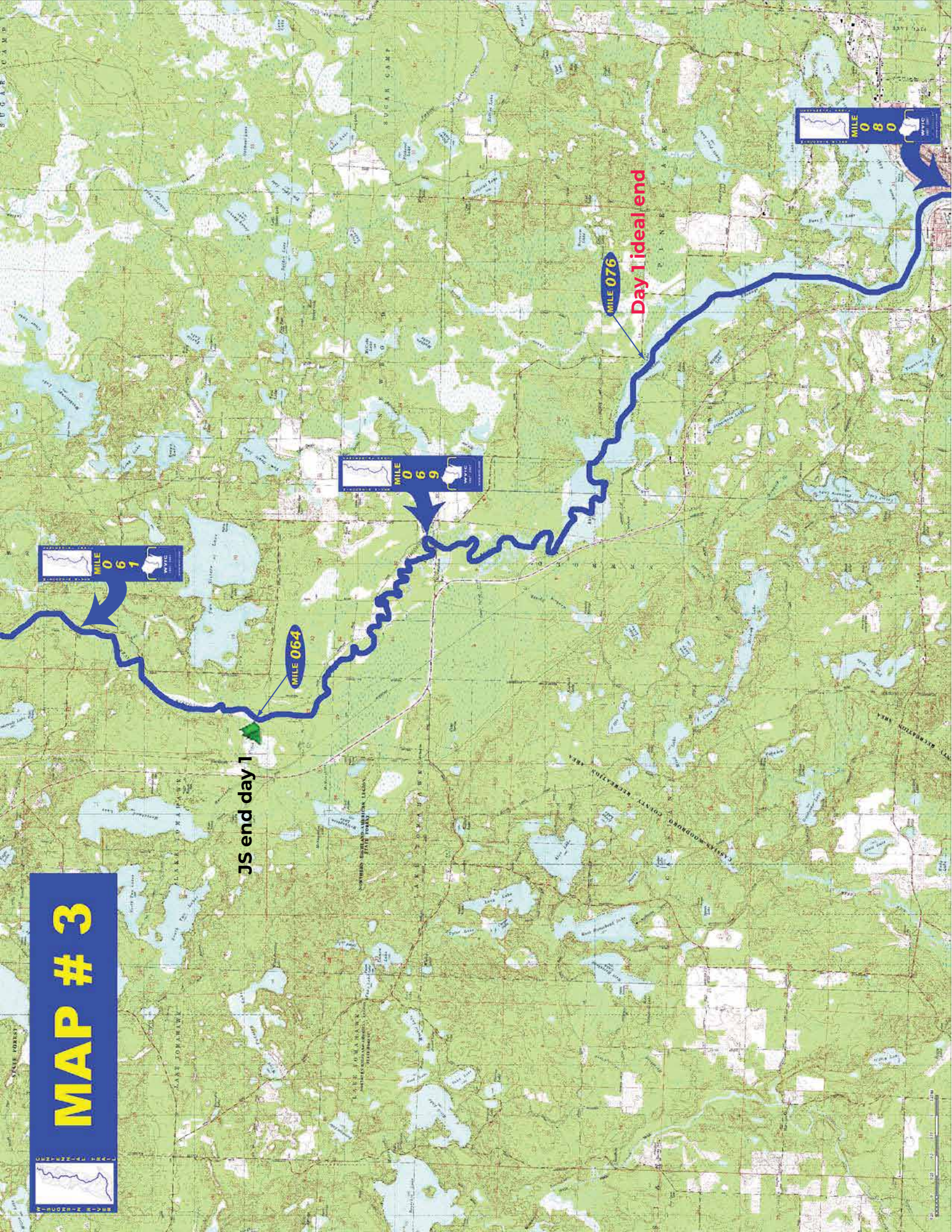


JS end day 1

MILE 064

MILE 076

Day 1 ideal end



WISCONSIN RIVER CENTENNIAL TRAIL



MAP #3 – Rainbow Dam to Rhinelander Dam

➤ **General Description**

- Miles 058 – 061 (Rainbow dam to River Rd bridge) Mostly flat water with good current, go through Class I Rainbow Rapids
- Miles 061 – 069 (River Rd bridge to McNaughton bridge) Floodplain broadens and river slows a few miles upstream from McNaughton
- Miles 069 – 076 (McNaughton bridge to River Rd landing) River winds through lowlands including wild rice marshes
- Miles 076 – 080 (River Rd landing to Rhinelander dam) Enter into upper sections of Rhinelander Flowage where wind and boat traffic can be challenging

Mile #	Landmark	Approximate hrs* from previous landmark
058	Rainbow dam	
061	River Rd bridge	1
069	McNaughton bridge	2 ³ / ₄
076	River Rd landing	2 ³ / ₄
080	Rhinelander dam	2

*Times vary depending on weather, river flow, and ability

➤ **Portages** (see portage maps by clicking on the dam symbol)

- Mile 080 Rhinelander dam – Access to the shorter portage route (about 1/3 mile) is gated but typically open during normal business hours (call 715-369-4241 ahead for access anytime) OR about a mile long route goes along city streets (take-out on left, put-in on right)

➤ **Landings suitable for take-out or put-in**

- Mile 059 WDNR County D boat landing provides access just below the Rainbow dam side with parking available (right)
- Mile 061 River Rd bridge canoe launch downstream of the bridge with parking available (left)
- Mile 069 Boat landing at McNaughton downstream of bridges with parking available (right)
- Mile 076 Boat landing off River Rd some parking available (left) **Day 1 ideal end**
- Mile 080 Boat landing at Hodag Park on Boom Lake (left)

➤ **Camping**

- Mile 060 WDNR – canoe campsite 43 at Rainbow Rapids (left)
- Mile 064 WDNR – canoe campsite at Horsehead Creek (right) **JS end day 1**

➤ **Other amenities**

- Mile 061 – Newbold Memorial Park with canoe launch, picnic area, restrooms and water available at River Rd bridge (left)
- Mile 080 – Many businesses in Rhinelander www.rhinelanderchamber.com
 - Hodag Park – Beach, picnic area, playground & boat landing (left)

➤ **Flow Information** – For information on river flow below Rainbow go to “Data & Links” on the home page of this website and under “River Flow Data from the U.S. Geological Survey” select “Wisconsin River at Rainbow Reservoir”.

MAP # 4

KINGS PORTAGE



HAT RAPIDS PORTAGE



RHINELANDER PORTAGE



Stay Left

Try to meet after whirlpool rapids for dry clothes/safety



WISCONSIN RIVER CENTENNIAL TRAIL



MAP #4 – Rhinelander Dam to Kings Dam

➤ **General Description**

- Miles 080 – 082 (Rhinelander dam to USH 8) Go through residential & industrial development in the city of Rhinelander
- Miles 082 – 087 (USH 8 to Hat Rapids dam) Attractive stretch through calm waters
- Miles 087 – 091 (Hat Rapids dam to Whirlpool rapids) Natural & scenic shorelines with numerous riffles and minor rapids lead to the Class II rapids
- Miles 091 – 099 (Whirlpool rapids to Lincoln County A) Left side of the island is short & straight but drops several feet, right side has longer rapids with many boulders. Fast water ends below Menard Isle. River widens with increased boating activity.
- Miles 099 – 104 (Lincoln County A to Kings dam) Lake Alice with heavy boating activity & challenging westerly winds

Mile #	Landmark	Approximate hrs* from previous landmark
080	Rhinelander dam	
082	USH 8 bridge	1
087	Hat Rapids dam	1½
091	Whirlpool rapids	1¾
099	County A bridge	3
104	Kings dam	2

*Times vary depending on weather, river flow, and ability

➤ **Portages** (see portage maps by clicking on the dam symbol)

- Mile 087 Hat Rapids dam – 500' well marked portage to a rocky put-in (left)
- Mile 091 Optional portage at Whirlpool rapids – 300' over an island through difficult rocky terrain
- Mile 104 Kings dam – 500' portage on a groomed & signed trail (left)

➤ **Landings suitable for take-out or put-in**

- Mile 087 Hat Rapids Hydro off Hat Rapids Rd gives access to the portage route (left)
- Mile 091 Access above Whirlpool Rapids off Camp 10 Road (left)
- Mile 099 Private landing at County A bridge maintained by tavern & grill (right)
- Mile 100 Public landing on Horseshoe Rd off Lincoln County A (left)
- Mile 104 Access below Kings dam off King Rd (left)

Try to meet after whirlpool rapids

➤ **Camping for dry clothes/safty**

- Mile 100 Private campground – “Sure-Wood Forest” on Lake Alice (right)
www.surewoodforest.com

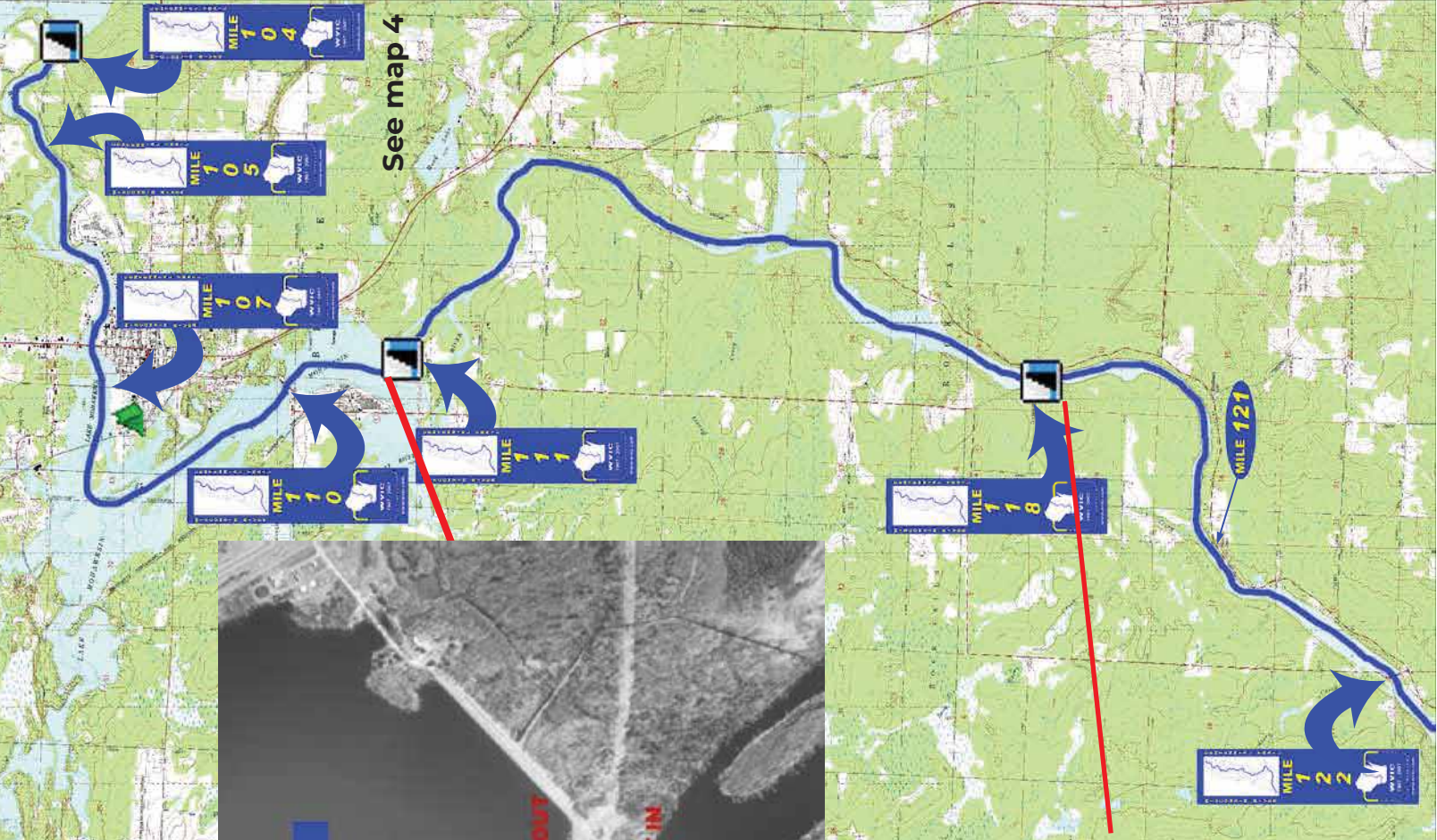
➤ **Other amenities**

- Mile 099 – Tavern & grill at County A bridge (right)
- Mile 100 – Tavern & grill at Sure-Wood Forest Campground (right)

➤ **Flow Information** – For information on river flow below Rainbow go to “Data & Links” on the home page of this website and under “River Flow Data from the U.S. Geological Survey” select “Wisconsin River at Rainbow Reservoir”.



MAP # 5



WISCONSIN RIVER CENTENNIAL TRAIL



MAP #5 – Kings Dam to County E

➤ **General Description**

- Miles 104 – 105 (Kings dam to USH 51) Short run of big river paddling
- Miles 105 – 107 (USH 51 to Tomahawk RR bridge) Entrance to Lake Mohawksin with much development
- Miles 107 – 111 (Tomahawk RR bridge to STH 86) Go through Lake Mohawksin surrounded by the city of Tomahawk
- Miles 111 – 118 (Tomahawk dam to Grandmother dam) First few miles have moderately swift current, river gradually widens to the narrow flowage
- Miles 118 – 122 (Grandmother dam to Lincoln County E) Scenic with some residential development, no rapids

Mile #	Landmark	Approximate hrs* from previous landmark
104	Kings dam	
105	USH 51 bridge	¼
107	Tomahawk RR bridge	¾
110	STH 86 bridge	1
111	Tomahawk dam	½
118	Grandmother dam	3
122	County E bridge	2

*Times vary depending on weather, river flow, and ability

➤ **Portages** (see portage maps by clicking on the dam symbol)

- Mile 111 Tomahawk dam – Take-out at the boat landing and portage 300' to a wooden canoe slide (left)
- Mile 118 Grandmother dam – Take-out at the boat landing and portage 500' to wooden steps below the power house (right)

➤ **Landings suitable for take-out or put-in**

- Miles 107 through 108 City of Tomahawk boat landings:
 - Kwahomot Ski Park – north side of North Fourth Street bridge (right)
 - SARA Park – north off West Somo Avenue (left)
 - Bradley Park – west off Tomahawk Avenue (left)
- Mile 111 Boat landing at portage take-out (left) & Pride Boat Landing below dam (left)
- Mile 118 Access to boat landing in Grandmother Flowage (portage take-out) and portage put-in below the dam (right)
- Mile 121 Rock Falls public boat landing off STH 107 (left)
- Mile 122 Lincoln County E bridge access downstream of bridge (right)

➤ **Camping**

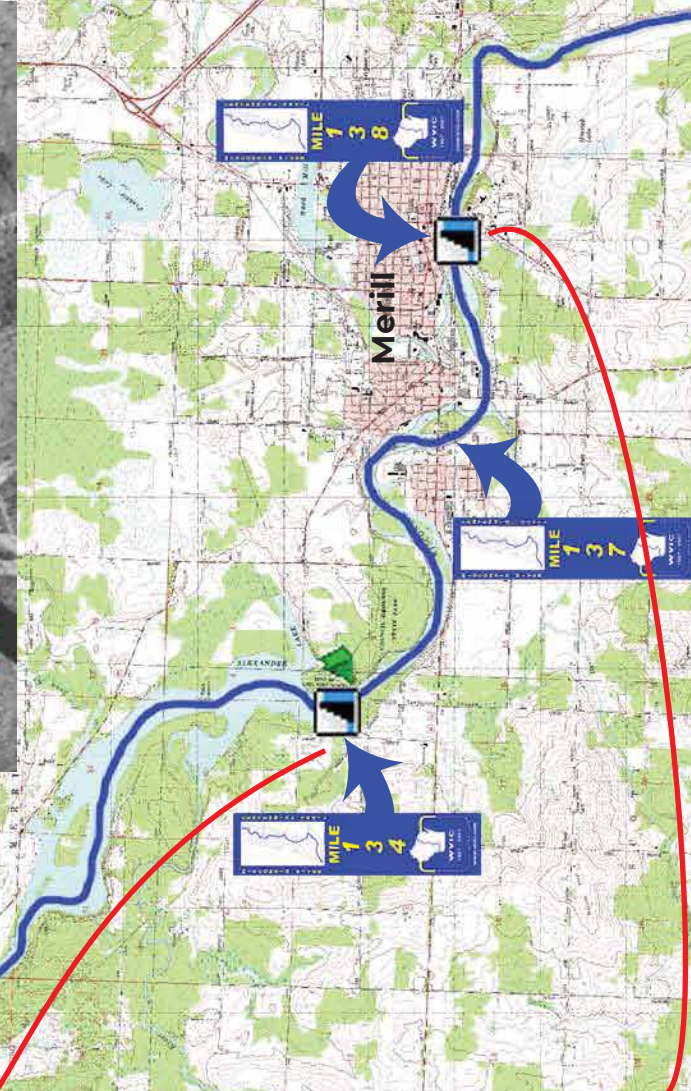
- Mile 107 City of Tomahawk – SARA Park campground with 10 sites

➤ **Other amenities**

- Mile 106 through Mile 110 – Many businesses in Tomahawk www.gototomahawk.com
- Mile 106 – Memorial Park with swimming beach, fishing pier & picnic area (left)
- Mile 107 – SARA Park with boat landing, swimming beach, ball fields, playground and restrooms (left)
- Mile 108 – Bradley Park with boat landing, playground, picnic area with shelters, and restrooms (left)

- **Flow Information** – For information on river flow go to “Links” on the home page of this website and under “River Flow Data from Wisconsin Public Service” select “Hydroelectric Plant Water Levels and River Flows” to get levels & flow for Tomahawk hydro.

MAP # 6



WISCONSIN RIVER CENTENNIAL TRAIL



MAP #6 – County E to Merrill Dam

➤ **General Description**

- Miles 122 – 124 (Lincoln County E to Grandfather dam) Go through the narrow Grandfather Flowage to the diversion channel (canoe trail) on the left
- Miles 124 – 126 (Grandfather dam to Camp New Wood) Short paddle with current dependent on release from Grandfather dam
- Miles 126 – 134 (Camp New Wood to Alexander dam) Scenic paddle through easily navigated Posey Rapids and more challenging Bill Cross Rapids, then enter Alexander Flowage with heavy boat traffic
- Miles 134 – 137 (Alexander dam to STH 64) An easily navigated rapids just below the dam, many small islands and another easy rapids just before the city of Merrill
- Miles 137 – 138 (STH 64 to Merrill dam) Go through residential & industrial development in the city of Merrill

Mile #	Landmark	Approximate hrs* from previous landmark
122	County E bridge	
124	Grandfather dam	1
126	Camp New Wood	1¼
134	Alexander dam	2½
137	STH 64 bridge	1¼
138	Merrill dam	½

*Times vary depending on weather, river flow, and ability

➤ **Portages** (see portage maps by clicking on the dam symbol)

- Mile 124 Grandfather dam – Paddle the diversion channel to a 1/3 mile portage trail (left)
- Mile 134 Alexander dam – Portage around the dam and follow the trail & a road in Council Grounds State Park for about 800' to the designated put-in site (left)
- Mile 138 Merrill dam – Portage take-out at the end of a cement wall to a 600' trail (left)

➤ **Landings suitable for take-out or put-in**

- Mile 124 Access below Grandfather dam with parking available (left)
- Mile 126 Camp New Wood County Park boat landing with parking available (left)
- Mile 131 Lokemoen Road public boat landing (left)
- Mile 134 Council Grounds State Park boat landing (left) & WPSC boat landing off Sunset Drive (right)
- Mile 137 City of Merrill boat landing at Ott's Park (right)

➤ **Camping**

- Mile 126 Lincoln County – Camp New Wood Park with 7 sites **Day 2 Ideal End**
- Mile 134 Wisconsin State Park– Council Grounds with 55 sites

➤ **Other amenities**

- Mile 126 – Camp New Wood County Park with water available, boat landing, restrooms, picnic area & shelters (left)
- Mile 134 – Council Grounds State Park with picnic areas, hiking trails, restrooms, boat landing, beach & water available (left)
- Mile 137 – Ott's Park with water available, boat landing, restrooms, ball fields, picnic area & shelter (right)
- Miles 137 through 138 – Many businesses in Merrill www.merrillchamber.com/

- **Flow Information** – For information on river flow go to “Links” on the home page of this website and under “River Flow Data from Wisconsin Public Service” select “Hydroelectric Plant Water Levels and River Flows” to get levels & flows for Grandfather & Alexander hydros.

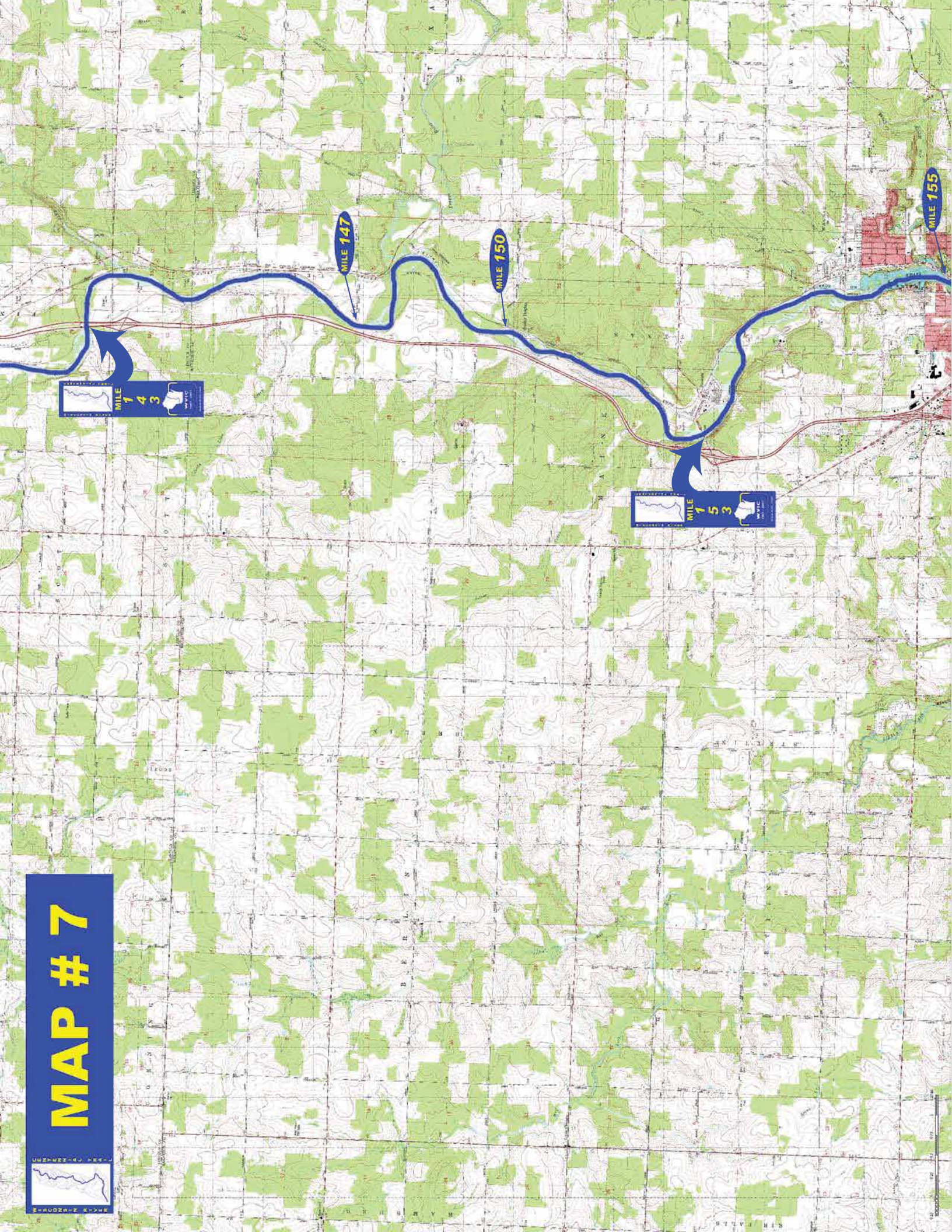
MAP # 7



MILE 155

MILE 150

MILE 147



WISCONSIN RIVER CENTENNIAL TRAIL



MAP #7 – Merrill Dam to Gilbert Park

➤ **General Description**

- Miles 138 – 143 (Merrill dam to I-39 bridge) Just below the dam is a easily navigated rapids leading to the wide river with steady current
- Miles 143 – 153 (I-39 bridge to Marathon County WW bridge) Current stays steady & slow up to easily navigated Trappe Rapids where the channel narrows and current increases at Granite Heights

Mile #	Landmark	Approximate hrs* from previous landmark
138	Merrill dam	
143	I-39 bridge	1½
153	County WW bridge	3
155	Gilbert Park	1

*Times vary depending on weather, river flow, and ability

➤ **Portages** (see portage maps by clicking on the dam symbol)

- Mile 153 Optional portage around the old Brokaw dam below County WW bridge - easy access to the right bank before the concrete abutments where the dam was located

➤ **Landings suitable for take-out or put-in**

- Mile 138 Riverside Park boat landing just below the Merrill dam (right)
- Mile 147 Access on Pine Bluff Rd off County W (left)
- Mile 150 Granite Heights access (left)
- Mile 155 Gilbert Park boat landing on the north side of Wausau (left)

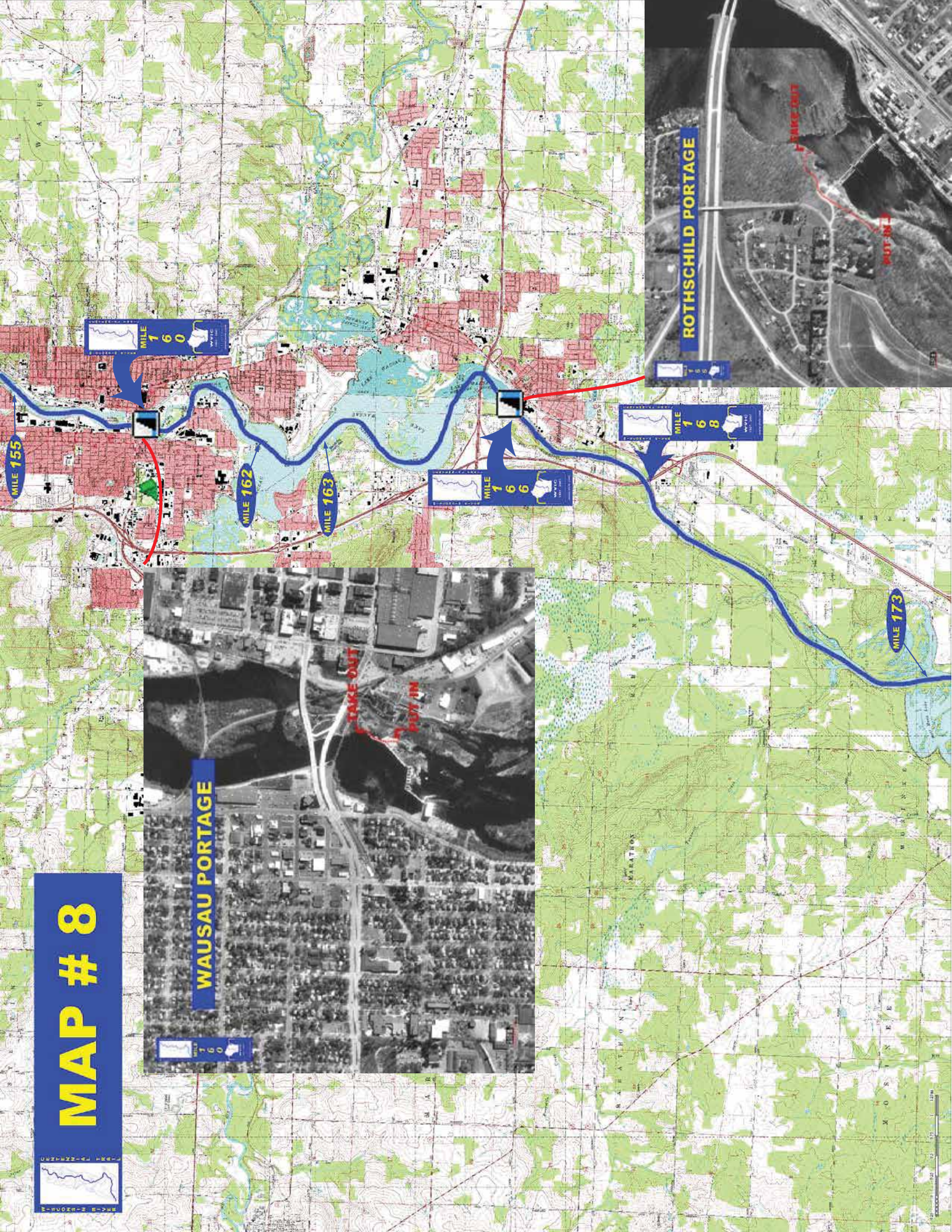
➤ **Camping** – No known campgrounds on this stretch of river

➤ **Other amenities**

- Mile 138 – Riverside Park with water available, boat landing, restrooms, playground, picnic area & shelter (right)
- Mile 155 – Gilbert Park with boat landing, picnic tables, fishing pier and parking available off Sixth Street in Wausau (left)

➤ **Flow Information** – For information on river flow below Merrill go to “Data & Links” on the home page of this website and under “Wisconsin River Flow Forecasts” select “Wisconsin River at Merrill”.

MAP # 8



WISCONSIN RIVER CENTENNIAL TRAIL



MAP #8 – Gilbert Park to Mosinee Flowage

➤ **General Description**

- Miles 155 – 160 (Gilbert Park to Wausau dam) The Wausau flowage continues through the city of Wausau
- Miles 160 – 166 (Wausau dam to Rothschild dam) River widens into shallow weedy Lake Wausau with heavy boat traffic
- Miles 166 – 168 (Rothschild dam to I-39 bridge) Noticeable current in this stretch depends on release from Rothschild dam, river is deep and navigable by motor boats
- Miles 168 – 173 (I-39 bridge to the Mosinee flowage) Pass by the Weston Power Plant on the left and continue into the widened floodplain of the Mosinee flowage

Mile #	Landmark	Approximate hrs* from previous landmark
155	Gilbert Park	
160	Wausau dam	1½
166	Rothschild dam	3
168	I-39 bridge	½
173	Mosinee flowage	2

*Times vary depending on weather, river flow, and ability

➤ **Portages** (see portage maps by clicking on the dam symbol)

- Mile 160 Wausau dam – Take the right channel around Barker/Stewart Island (the large island after the Bridge Street bridge), after the second railroad bridge a buoy line guides you to the take-out on the left shore just above the dam for about a 400' portage around the Wausau Papers office building (left)
- Mile 166 Rothschild dam – Take out at the wooden steps at the end of the buoy line and follow the portage signs for about ⅓ mile to the boat ramp in the tailwater (right)

➤ **Landings suitable for take-out or put-in**

- Mile 155 Schofield Park boat landing (right)
- Mile 160 Oak Island boat landing (left) and Riverside Park boat landing (right)
- Mile 162 Memorial Park boat landing (left) and D.C. Everest Park boat landing (right)
- Mile 163 Bluegill Bay Park boat landing (right)
- Mile 166 Domtar boat landing in tailwater of Rothschild dam (right)

➤ **Camping** – Camping available at Marathon Park (½ mile west of the river on Stewart Ave.)

➤ **Other amenities**

- Mile 155 through Mile 163 – Many businesses in Wausau <http://www.ci.wausau.wi.us>
- Mile 155 – Schofield Park with boat landing, picnic area with shelter, ball fields, playground, restroom and water available (right)
- Mile 159 through Mile 161 – Several downtown city parks with many amenities: boat landing, whitewater kayak & canoe course, restrooms, playgrounds, ball fields, picnic areas with shelters, trails, ball fields and courts, and water available at some
- Mile 162 – Memorial Park with boat landing, picnic area with shelters, disc golf, tennis courts and playground (left)
- Mile 162 – D.C. Everest Park with boat landing, picnic area with shelter, fishing pier, restrooms and water available (right)
- Mile 163 – Bluegill Bay Park with boat landing, picnic area with shelters, restrooms, ball courts, trails, playground, fishing pier and water available (right)

➤ **Flow Information** – For information on river flow go to “Links” on the home page of this website. Under “River Flow Data from Wisconsin Public Service” select “Hydroelectric Plant Water Levels and River Flows” to get levels & flow for Wausau hydro. Under “Wisconsin River Flow Forecasts” select “Wisconsin River at Rothschild” for flow below Rothschild.

MAP # 9

MOSINEE PORTAGE

Parking



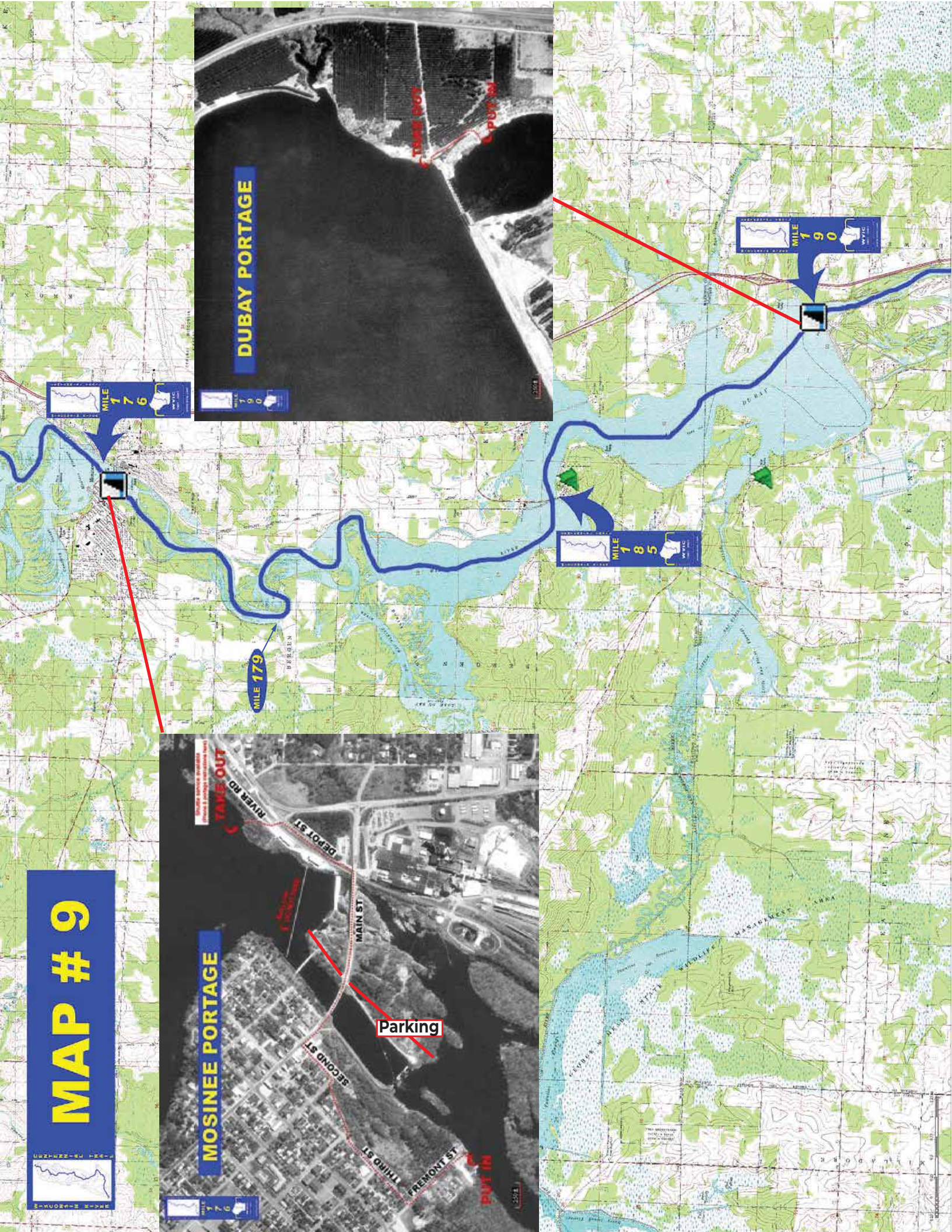
DUBAY PORTAGE

TAVES OUT
PUT IN



MILE 185

MILE 190



WISCONSIN RIVER CENTENNIAL TRAIL



MAP #9 – Mosinee Flowage to DuBay Dam

➤ **General Description**

- Miles 173 – 176 (Mosinee flowage to Mosinee dam) Maze-like Mosinee flowage is filled with many small islands and it is easy to temporarily get off course
- Miles 176 – 185 (Mosinee dam to STH 34 bridge) River starts out with noticeable current with some sharp bends before the Eau Pleine Reservoir empties in on the right marking the upper end of Lake DuBay
- Miles 185 – 190 (STH 34 to DuBay dam) The river spreads out considerably into 6,830 acre Lake DuBay with much recreational activity and turbulent conditions on windy days

Mile #	Landmark	Approximate hrs* from previous landmark
173	Mosinee flowage	
176	Mosinee dam	1
185	STH 34 bridge	3
190	DuBay dam	2

*Times vary depending on weather, river flow, and ability

➤ **Portages (see portage maps by clicking on the dam symbol)**

- Mile 176 Mosinee dam – A telephone is provided attached to an informational sign at the portage for assistance provided by Mosinee paper. Be prepared for about a 45 minute to 1 hour wait. To call ahead from any phone dial (715)692-3304 to plan for a shuttle OR a portage route of just over 1 mile goes through Mosinee (take-out on left, put-in on right)
- Mile 190 DuBay dam – Take out at the marked sandy beach just upstream of the DuBay dam to a 750' portage that ends with a steep descent into the tailwater (left)

➤ **Landings suitable for take-out or put-in**

- Mile 176 – River Park boat landing to access above the Mosinee dam (right)
 - Chuck's Landing on Fremont St consists of two boat landing areas with parking provided to access below the Mosinee dam (right)
- Mile 179 – Beans Eddy Road boat landing (right)
- Mile 185 – SeaGull Lane boat landing (left)
 - Lilac Road boat landing (right)
- Mile 189 – DuBay County Park boat landing (right)
- Mile 190 – Old Hwy 51 boat landing to access above the DuBay dam (left)
 - Landing at DuBay powerhouse to access below DuBay dam (right)

(More access sites available on Lake DuBay, see Consolidated Water Power Company map at <http://cwpc.com/PDFs/MapDuBayRecreation.pdf> for additional information)

➤ **Camping**

- Mile 185 Private campground – “Lake DuBay Shores (715-457-2484)” (right)
- Mile 189 Portage County – DuBay Park with 31 sites (right)
<http://www.co.portage.wi.us/Parks%20Department/dubay%20park.htm>

➤ **Other amenities**

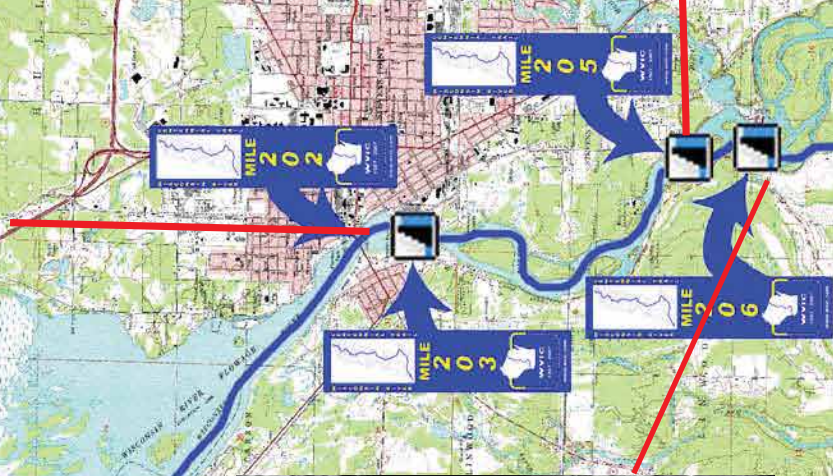
- Mile 176 – Many businesses in Mosinee <http://www.mosinee.wi.us>
 - River Park in Mosinee with boat landings, picnic area with shelter, playground and fishing pier (right)
 - Mile 189 – DuBay County Park with boat ramp, large picnic area with shelter, playground, swimming beach, and ball field (right)
- (Additional private restaurants & marinas on Lake DuBay not listed)

➤ **Flow Information** – For information on river flow below Rothschild go to “Data & Links” on the home page of this website and under “Wisconsin River Flow Forecasts” select “Wisconsin River at Rothschild”.

MAP #10

MILE 192
Day 3 end

MILE 197



WISCONSIN RIVER CENTENNIAL TRAIL



MAP #10 – DuBay Dam to Whiting Plover Portage

➤ **General Description**

- Miles 190 – 202 (DuBay dam to USH 10 bridge) First 6-7 miles is riverine turning into lake canoeing in the 3,915 acre Stevens Point Flowage through the city of Stevens Point
- Miles 202 – 203 (USH 10 bridge to Stevens Point dam) Pass under the highway bridge to the portage on the right
- Miles 203 – 205 (Stevens Point dam to Whiting dam) Relatively undeveloped narrow and swift section
- Miles 205 – 206 (Whiting dam to Whiting Plover portage) Short shallow, rocky stretch between dams is often portaged

Mile #	Landmark	Approximate hrs* from previous landmark
190	DuBay dam	
202	USH 10 bridge	4
203	Stevens Point dam	1/2
205	Whiting dam	1
206	Whiting Plover portage	1/2

*Times vary depending on weather, river flow, and ability

➤ **Portages** (see portage maps by clicking on the dam symbol)

- Mile 203 Stevens Point dam – Take-out at the dike and follow the dirt road for about 1000' to the put-in just below the dam (right)
- Mile 205 Whiting dam – Take-out where the power lines cross the river, follow the dirt road to River Road then left to the put-in for about a 1/4 mile long portage OR continue on River Rd to the Whiting Plover (Al Tech) put-in for a portage just under 1 mile long (right)
- Mile 206 Whiting Plover portage – Take-out at a marked grassy area and follow the signed trail to River Road for less than 1/4 mile to the put-in at Al Tech Park (right)

➤ **Landings suitable for take-out or put-in**

- Mile 197 USH 10 Landing (right)
- Mile 201 Bukolt Park boat landing (left)
- Mile 202 Pfiffner Pioneer Park boat landing (left)

(More access sites available on Stevens Point Flowage, see Consolidated Water Power Company map at <http://cwpc.com/PDFs/MapStevensPointRecreation.pdf>)

➤ **Camping**

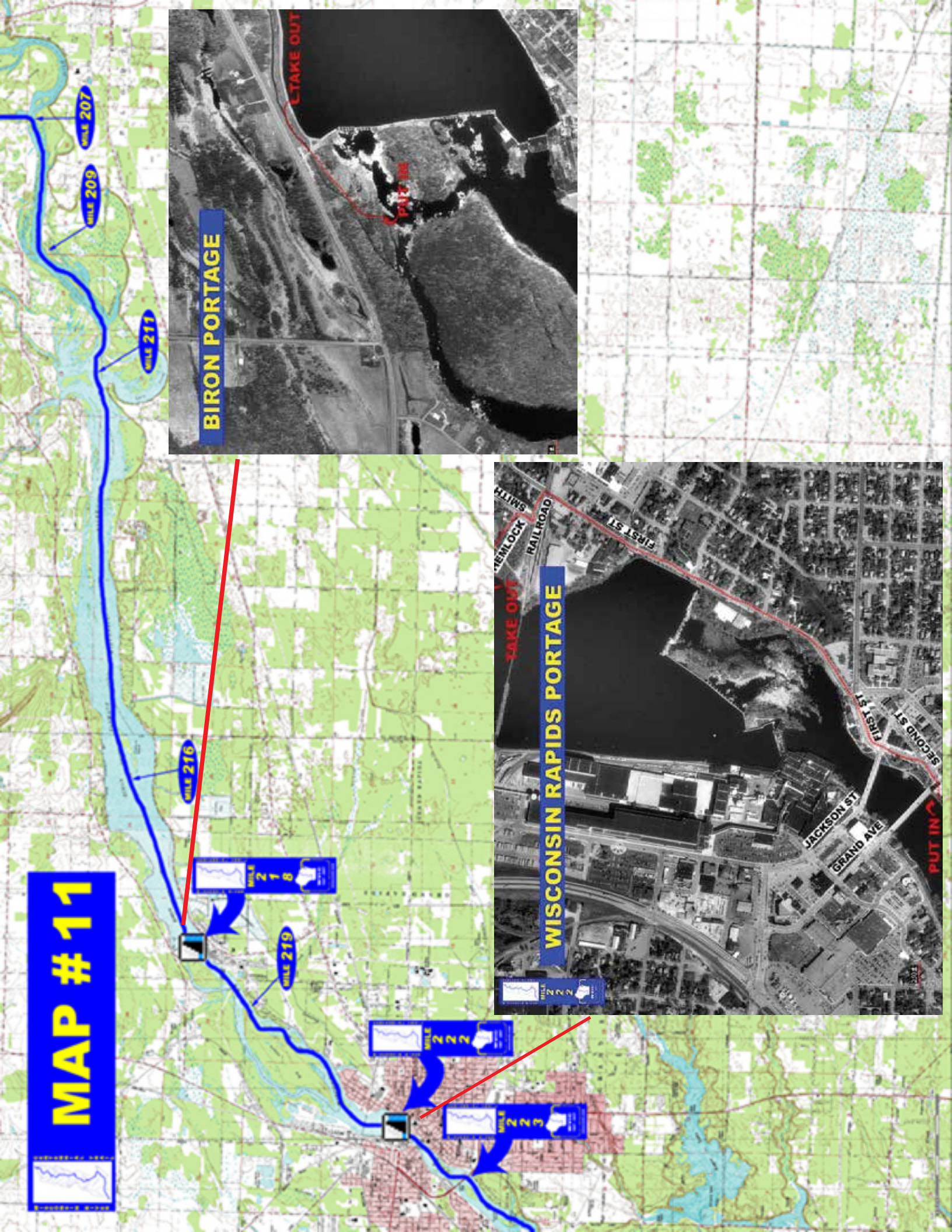
- Mile 192 Private campground – “River’s Edge Campground (715-344-8058)” (left)
Day 3 end

➤ **Other amenities**

- Mile 201 through Mile 205 – Many businesses in Stevens Point <http://www.spacvb.com/> and <http://stevenspoint.com/index.html>
- Mile 201 – Bukolt Park with boat landing, ball fields, restrooms, picnic area, beach and playground (left)
- Mile 202 – Mead Park with ball fields, ball courts, restrooms, picnic areas with shelter, beach, disc golf and playground (right)
 - Pfiffner Pioneer Park with boat landing, boat slips, trails, restrooms, picnic area and playground (left)
- Mile 203 – Consolidated Parkway with picnic areas, canoe and fishing access (right)
- Mile 206 – Al Tech Park with picnic area, canoe and fishing access (right)

- **Flow Information** – For information on river flow below Rothschild go to “Data & Links” on the home page of this website and under “Wisconsin River Flow Forecasts” select “Wisconsin River at Rothschild”. Also check the “Wisconsin River at Wisconsin Rapids” to get a better indication of river conditions.

MAP #11



BIRON PORTAGE

WISCONSIN RAPIDS PORTAGE

TAKE OUT

PUT IN

TAKE OUT

PUT IN

MILE 207

MILE 209

MILE 211

MILE 216

MILE 218

MILE 219

MILE 222

MILE 223

SLIWS

RAILROAD

FIRST ST

JACKSON ST

GRAND AVE

FIRST ST

SECOND ST

THIRD ST

FOURTH ST

FIFTH ST

SIXTH ST

SEVENTH ST

EIGHTH ST

NINTH ST

TENTH ST

ELVENTH ST

TWENTH ST

TWENTY-FIRST ST

TWENTY-SECOND ST

TWENTY-THIRD ST

TWENTY-FOURTH ST

TWENTY-FIFTH ST

TWENTY-SIXTH ST

TWENTY-SEVENTH ST

TWENTY-EIGHTH ST

TWENTY-NINTH ST

THIRTIETH ST

WISCONSIN RIVER CENTENNIAL TRAIL



MAP #11 – Whiting Plover Portage to Expressway Bridge

➤ **General Description**

- Miles 206 – 211 (Whiting Plover portage to Biron flowage) Carefully navigate fast water and rocks below the dam. Stay to the right of the group of large islands for the shortest route. Rocky Run and Mill creeks empty in on the right marking the upper end of Biron flowage.
- Miles 211 – 218 (Biron flowage to Biron dam) Lake canoeing in the narrow 2,078 acre, 7 mile long flowage
- Miles 218 – 222 (Biron dam to Wisconsin Rapids dam) Go around either side of Big Island, the channel is on the left but the right shoreline is more scenic
- Miles 222 – 223 (Wisconsin Rapids dam to Expressway bridge) The river continues through the city of Wisconsin Rapids with numerous islands in this section

Mile #	Landmark	Approximate hrs* from previous landmark
206	Whiting Plover portage	
211	Biron flowage	1½
218	Biron dam	2½
222	Wisconsin Rapids dam	1½
223	Expressway bridge	½

*Times vary depending on weather, river flow, and ability

➤ **Portages (see portage maps by clicking on the dam symbol)**

- Mile 218 Biron dam – Take-out on the steep riprapped bank and proceed down the dike to a trail for a ¼ mile portage into the right channel (right)
- Mile 222 Wisconsin Rapids dam – Take-out upstream of the railroad bridge to begin the over 1 mile long portage through Wisconsin Rapids to the put-in next to the Elks Club (a map is posted at the take-out) OR call for assistance (715)422-3303 but be aware that it might take some time dispatching a vehicle (left)

➤ **Landings suitable for take-out or put-in**

- Mile 207 Blue Heron Lane boat landing (right)
 - Mile 209 Galecke Park boat landing (left)
 - Mile 216 – North Biron Drive boat landing (left)
 - River Road boat landing (right)
 - Mile 219 South Biron Drive boat landing (left)
- (More access sites available on Biron & Wisconsin Rapids Flowages, see Consolidated Water Power Company maps at <http://cwpc.com/PDFs/MapBironRecreation.pdf> and <http://cwpc.com/PDFs/MapWisconsinRapidsRecreation.pdf>)

➤ **Camping**

- Mile 211 Private campground – “Ridgewood Campground (715-344-8750)” (left)

➤ **Other amenities**

- Mile 209 – Galecke Park with boat landing, beach and picnic
- Mile 219 – South Biron Drive with boat landing and accessible fishing pier (left)
- Mile 220 through Mile 224 – Many businesses in Wisconsin Rapids
<http://www.wirapids.org/> and <http://www.visitwisrapids.com/>

➤ **Flow Information** – For information on river flow below Wisconsin Rapids go to “Links” on the home page of this website and under “Wisconsin River Flow Forecasts” select “Wisconsin River at Wisconsin Rapids”.

MAP #12

PORT EDWARDS PORTAGE



Day 3: reach by 4pm
Take a break and paddle to
mile 268

MILE 231

MILE 232

MILE 234

MILE 237

MILE 239

MILE 240

MILE 230

MILE 225

MILE 226

MILE 224

NEKOOSA PORTAGE



CENTRALIA PORTAGE



WISCONSIN RIVER CENTENNIAL TRAIL



MAP #12 – Expressway Bridge to Petenwell Flowage

➤ **General Description**

- Miles 223 – 225 (Expressway bridge to Centralia dam) Continue through the city of Wisconsin Rapids going around several large islands
- Miles 225 – 226 (Centralia dam to Port Edwards dam) The village of Port Edwards lies on the right bank of the river
- Miles 226 – 231 (Port Edwards dam to Nekoosa dam) Just below the dam is a rocky rapids before Nekoosa

Mile #	Landmark	Approximate hrs* from previous landmark
223	Expressway bridge	
225	Centralia dam	1
226	Port Edwards dam	½
231	Nekoosa dam	2
237	Petenwell Flowage	2

*Times vary depending on weather, river flow, and ability

flowage begins. The city of Nekoosa is on the right at the south end of the flowage.

- Miles 231 – 240 (Nekoosa dam to Petenwell flowage) Below the dam the river meanders through shallow water sloughs to the beginning of the 23,040 acre Petenwell Flowage where rough water from wind and large boats can be hazardous to canoeists

● **Day 3: reach mile 132 by 4pm Take a break and paddle to mile 268**

➤ **Portages** (see portage maps by clicking on the dam symbol)

- Mile 225 Centralia dam – Take-out along the edge of a private golf course and portage about ⅓ mile to wide wooden steps at the put-in that will lead you back to the river (left)
- Mile 226 Port Edwards dam – Take-out up a steep path to a wooded trail for less than ½ mile long portage to a path that descends to the put-in on a sandy shoreline (left)
- Mile 231 Nekoosa dam – Take-out is at the downstream end of Riverside Park, follow the 1½ mile long portage through Nekoosa to the put-in at another city park (right)

➤ **Landings suitable for take-out or put-in**

- Mile 224 Ben Hanson park boat landing (right)
- Mile 232 Nekoosa boat landing at the sewage treatment plant (right)
- Mile 234 Plank Hill boat landing (right)
- Mile 237 Wood County Day Use Area with boat landing at Devil's Elbow (left)
- Mile 239 Third St boat landing (right) Chester Creek boat landing (left)

➤ **Camping**

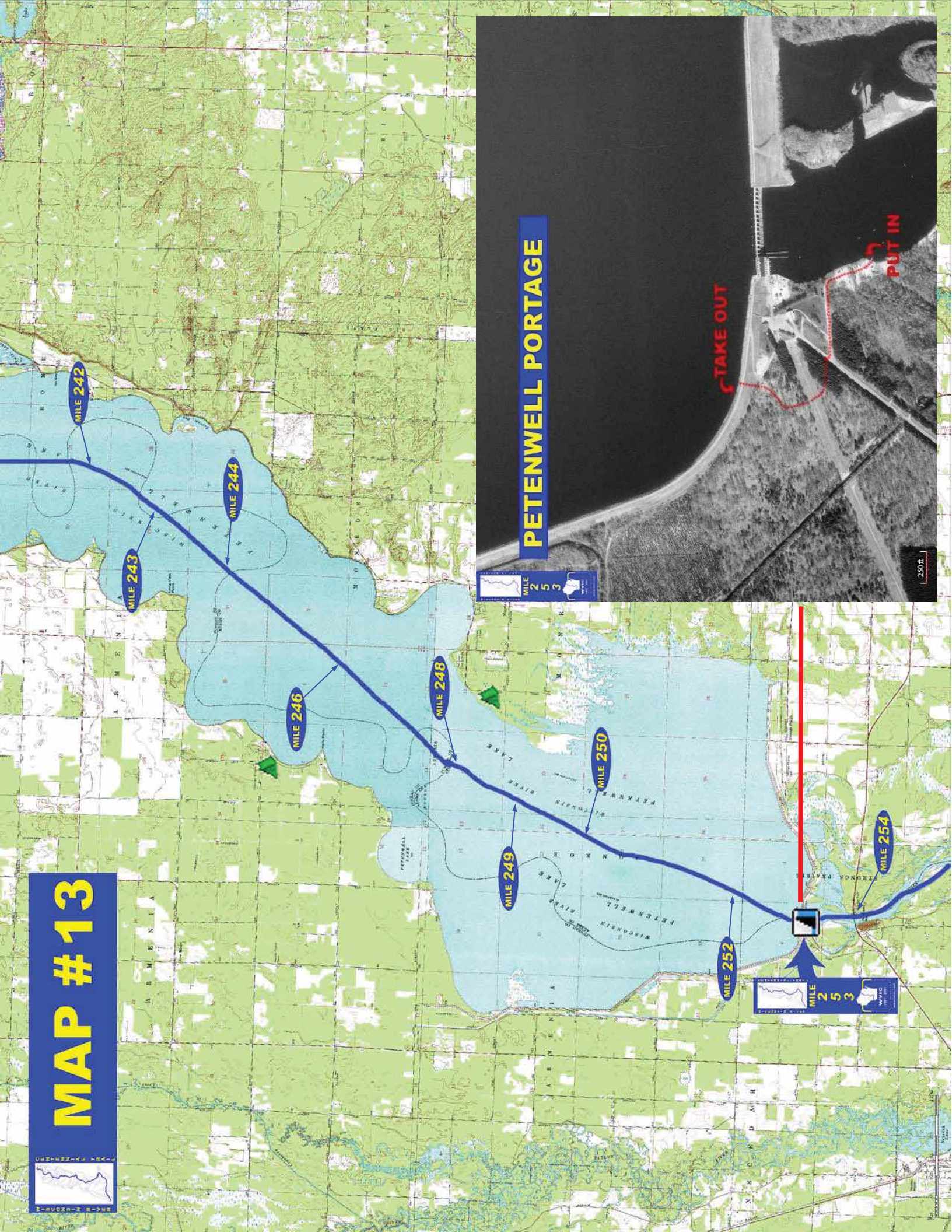
- Mile 235 Private campground – “Deer Trail Campground (715-886-3871)” (left)

➤ **Other amenities**

- Mile 223 – Demitz Park with fishing area and accessible pier (left)
 - Many businesses in Wisconsin Rapids <http://www.wirapids.org/>
- Mile 224 – Ben Hanson Park with boat landing, picnic areas with shelters, playground, ball courts, restrooms, and bike trail (right)
- Mile 230 – Riverside Park with picnic pavilions, playground, and restrooms (right)
 - Some businesses in Nekoosa <http://www.nekoosa.org/city.htm> (right)
- Mile 237 – Wood County Day-use area at Devils Elbow (east of the river channel) with boat landing, restrooms, and picnic area (left)
- Mile 240 – Twin Lakes access (east of the channel) with beach, picnic area, and hiking trail (left)

- **Flow Information** – For information on river flow below Wisconsin Rapids go to “Links” on the home page of this website and under “Wisconsin River Flow Forecasts” select “Wisconsin River at Wisconsin Rapids”.

MAP #13



PETENWELL PORTAGE



TAKE OUT

PUT IN

250E

WISCONSIN RIVER CENTENNIAL TRAIL



MAP #13 – Petenwell Flowage

➤ **General Description**

- Miles 237 – 253 (Petenwell Flowage)
23,040 acre Petenwell Flowage is the second largest inland body of water in Wisconsin. Rough water from wind and large boats can be hazardous to canoeists. Individuals must use extreme caution because of the size, complexity, and constantly changing conditions.

Mile #	Landmark	Approximate hrs* from previous landmark
237	Petenwell Flowage	
253	Petenwell dam	5-6

*Times vary depending on weather, river flow, and ability

➤ **Portages (see portage maps by clicking on the dam symbol)**

- Mile 253 Petenwell dam – Take-out at a concrete base with wooden steps and a wood canoe slide going up the dike for a 0.4 mile portage to the landing below the dam (right)

➤ **Landings suitable for take-out or put-in**

- Mile 242 – Apache Lane boat landing (left)
- Mile 243 – Barnum Bay boat landing (left)
- Mile 244 – Town of Monroe Park boat landing (left)
- Mile 246 – Juneau County Wilderness Park boat landing (right)
- Mile 248 – Adams County Petenwell Park boat landing (left) Armenia boat landing (right)
- Mile 250 – Big Horn boat landing (left)
- Mile 252 – Van Kuren boat landing (left)
- Mile 254 – STH 21 Wayside boat landing (left)

(For a Wisconsin River Power Company informational map of Petenwell Flowage showing additional access sites call 608-565-2500 or email dmjohnson@integrysgroup.com)

➤ **Camping**

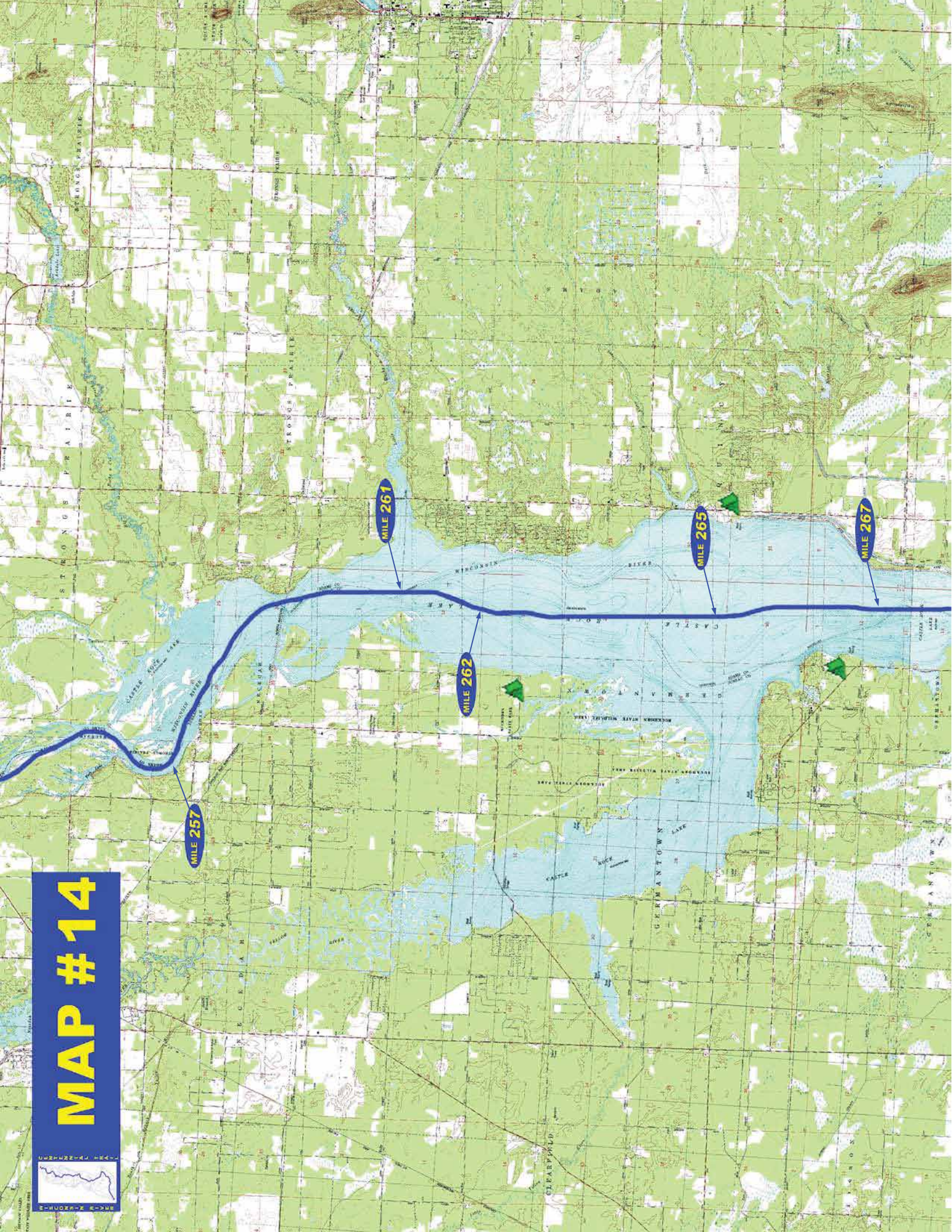
- Mile 246 Juneau County – Wilderness Park with 140 sites & showers available (right) <http://www.juneaucounty.com/tourism.asp?cid=12&id=183>
- Mile 248 Adams County – Petenwell Park with 500 campsites, 90 boat slips & heated restroom shower (left) <http://www.co.adams.wi.gov/default.asp?id=138&mnu=138>

➤ **Other amenities**

- Mile 243 – Barnum Bay with boat landing, beach, picnic area, restrooms, sailing center, and boater concessions (left)
- Mile 244 – Town of Monroe Park with boat landing, picnic area and restrooms (left)
- Mile 246 – Juneau County Wilderness Park with boat landing, camping, beach, picnic area, restrooms (right)
- Mile 248 – Adams County Petenwell Park (open year round) with boat landing, camping, beach, picnic area, restrooms, and hiking and cross country ski trails (left)
 - Petenwell Veterans Park with beach, picnic area, restrooms, and trails (right)
- Mile 252 – Van Kuren Landing with boat landing, beach, picnic area, and trails (left)
- Mile 253 – Petenwell Powerhouse with boat landing, observation tower, restrooms, boater concessions, and trail (right)
- Mile 254 – STH 21 Wayside with boat landing, restrooms, and picnic area (left)

- **Flow Information** – For information on river flow below Wisconsin Rapids go to “Links” on the home page of this website and under “Wisconsin River Flow Forecasts” select “Wisconsin River at Wisconsin Rapids”. Water levels on Petenwell Flowage remain relatively constant during the open water season.

MAP #14



WISCONSIN RIVER CENTENNIAL TRAIL



MAP #14 – Castle Rock Flowage

➤ **General Description**

- Miles 253 – 268 (Castle Rock Flowage)
16,640 acre Castle Rock Flowage is the fourth largest inland body of water in Wisconsin. Individuals must use extreme caution; the flowage is relatively shallow and quickly becomes turbulent on windy days.

➤ **Portages** (see portage maps by clicking on the dam symbol)

- See MAP #13 for Petenwell portage and MAP #15 for Castle Rock portage

➤ **Landings suitable for take-out or put-in**

- Mile 257 Osprey Landing (right)
 - Mile 261 Mays Point boat landing (right) Little Roche a Cri boat landing (left)
 - Mile 265 Snug Harbor boat landings (left) Adams County Castle Rock Park boat landing (left)
 - Mile 265 Germantown Park boat landing and O’Dells Bay Public Marina both located on the west side of the Yellow River arm of the flowage (right)
 - Mile 267 Juneau County Castle Rock Park boat landing (right)
- (For a Wisconsin River Power Company informational map of Castle Rock Flowage showing additional access sites call 608-565-2500 or email dmjohnson@integrysgroup.com)

➤ **Camping**

- Mile 262-265 Wisconsin State Park – Buckhorn with 56 sites and an accessible cabin (right) <http://www.dnr.state.wi.us/org/land/parks/specific/buckhorn/>
- Mile 265 Adams County – Castle Rock Park with 200 campsites and showers available (left) <http://www.adamscountyparkswi.com/>
- Mile 267 Juneau County – Castle Rock Park with over 200 sites and showers available (right) <http://www.juneaucounty.com/tourism.asp?cid=12&id=183>

➤ **Other amenities**

- Mile 262-265 – Buckhorn State Park with boat landings, camping, picnic areas and day use facilities with restrooms, natural areas, and trails(right)
- Mile 264 – Carlson’s Beach Area with swimming beach and picnic area (left)
- Mile 265 – Adams County Castle Rock Park with boat landing, camping, picnic area, beach, restrooms and playground (left)
- Mile 267 – Juneau County Castle Rock Park with boat landing, camping, picnic area, beach, restrooms, playground, concessions and water available (right)

➤ **Flow Information** – For information on river flow below Wisconsin Rapids go to “Links” on the home page of this website and under “Wisconsin River Flow Forecasts” select “Wisconsin River at Wisconsin Rapids”. Also check the “Wisconsin River at Wisconsin Dells” to get a better indication of river conditions. Water levels on Castle Rock Flowage remain relatively constant during the open water season.

Mile #	Landmark	Approximate hrs* from previous landmark
253	Petenwell dam	
256	Castle Rock Flowage	1
260	Railroad bridge	1½
268	Castle Rock dam	3½

*Times vary depending on weather, river flow, and ability

MAP #15



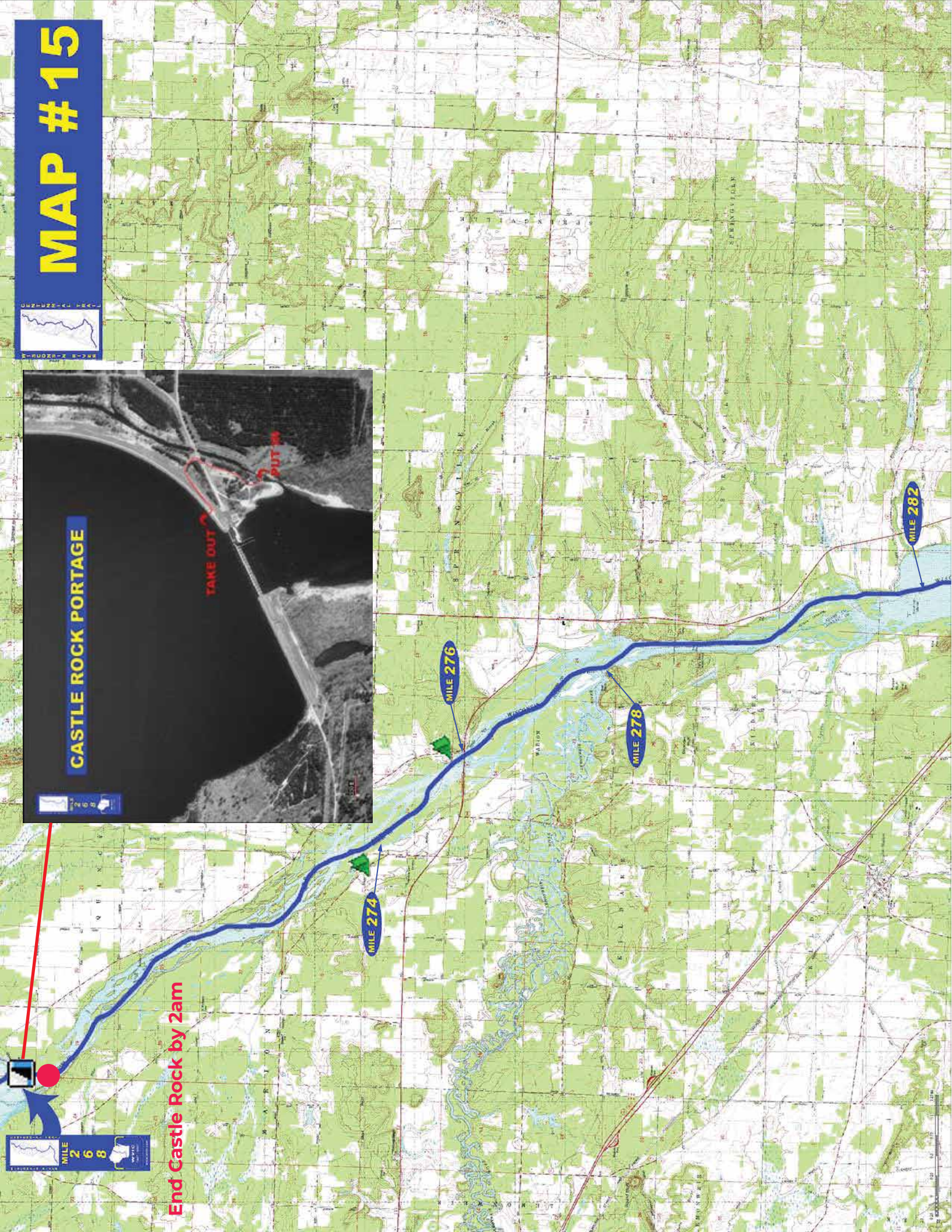
End Castle Rock by 2am

MILE 274

MILE 276

MILE 278

MILE 282



WISCONSIN RIVER CENTENNIAL TRAIL



MAP #15 – Castle Rock Dam to Upper Dells

➤ **General Description**

- Miles 268 – 276 (Castle Rock dam to STH 82 bridge) The river flows south past Castle Rock with numerous side channels and sloughs containing many islands and sandbars
- Miles 276 – 278 (STH 82 bridge to Lemonweir River) Lemonweir River flows in on the right with the south shore bordered by high sandstone cliffs
- Miles 278 – 282 (Lemonweir River to Upper Dells) River is narrow and deep as it passes between high bluffs and unique rock formations until Clarke Island where several tributaries enter forming side channels, sandbars and willow islands

Mile #	Landmark	Approximate hrs* from previous landmark
268	Castle Rock dam	
276	STH 82 bridge	2½
278	Lemonweir River	¾
282	Upper Dells	1¼

*Times vary depending on weather, river flow, and ability

➤ **Portages** (see portage maps by clicking on the dam symbol)

- Mile 268 Castle Rock dam – Take-out at a cement ramp and follow the route for about a 1/3 mile long portage to the put-in just at the mouth of the Castle Rock ditch that parallels the east dike (left)

➤ **Landings suitable for take-out or put-in**

- Mile 268 Wisconsin River Power Company WRPCO boat landing below Castle Rock dam (left) **Day 3 end, Castle Rock by 2am: Sleep Technically day 4**
- Mile 278 Two Rivers boat landing where the Lemonweir River enters the Wisconsin (right)
- Mile 282 Town of Dell Prairie boat landing (left)

➤ **Camping**

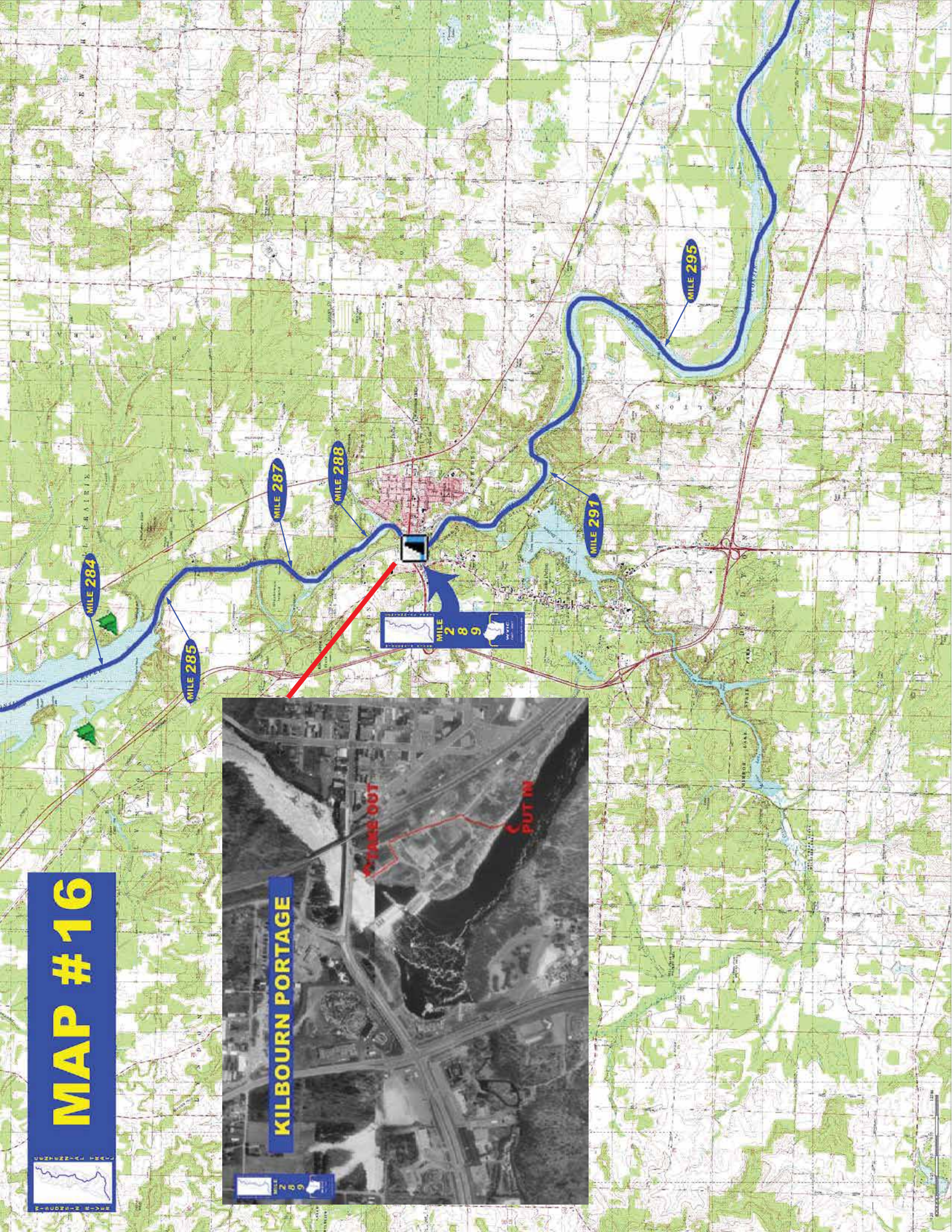
- Mile 274 Private campground – “Castle Rock Resort & Campground (608-847-6269)”
- Mile 276 Private campground – “Point Bluff Resort (608-253-6181)” with canoe and kayak rentals and shuttle service <http://www.pointbluff.com/>
- Sandbar and island camping is common but make sure the land is publicly owned and beware of changing water levels

➤ **Other amenities**

- Mile 268 – WRPCO Castle Rock dam recreation area with boat landing, picnic area, restrooms, boater concessions, and trail (left)

➤ **Flow Information** – For information on river flow at Wisconsin Dells go to “Links” on the home page of this website and under “Wisconsin River Flow Forecasts” select “Wisconsin River at Wisconsin Dells”.

MAP #16



KILBOURN PORTAGE

TURNS OUT

PUT IN

MILE 289

WISCONSIN RIVER CENTENNIAL TRAIL



MAP #16 – Upper Dells to Pine Island State Wildlife Area

➤ **General Description**

- Miles 282 – 289 (Upper Dells to Kilbourn dam) The river widens into a 3-mile long lake with abundant fishing boats and is then constricted by high sandstone walls into a narrow channel with heavy traffic from tour boats, powerboats, and personal watercraft creating hazardous conditions for canoeists. Channel splits around Blackhawk Island, the recommended longer route being slower, more scenic and safer.

Mile #	Landmark	Approximate hrs* from previous landmark
282	Upper Dells	
289	Kilbourn dam	2½
302	Pine Island Wildlife Area	4
*Times vary depending on weather, river flow, and ability		

- Miles 289 – 302 (Kilbourn dam to Pine Island State Wildlife Area) Enter a swift tailwater area with strong currents and eddies for the first few miles bordered by sandstone cliffs with sandy beaches. Tour boats are also common in the Lower Dells down to the Rocky Islands. The river then straightens out and offers wooded islands, sandbars, and small secondary channels as it flows easterly through a wider floodplain.

➤ **Portages (see portage maps by clicking on the dam symbol)**

- Mile 289 Kilbourn dam – Take-out goes up a gravel path to the powerhouse entrance road for a ¼ mile portage to a parking area with a steep path leading down to the tail water area (left)

➤ **Landings suitable for take-out or put-in**

- Mile 284 Private landing at River Bay Camping Resort & Marina (right)
- Mile 287 Unimproved access on west side of Blackhawk Island (right)
- Mile 288 Crandals Bay municipal boat landing (left from river, right side of bay)
- Mile 295 Fox Run Rd boat landing (left)

➤ **Camping**

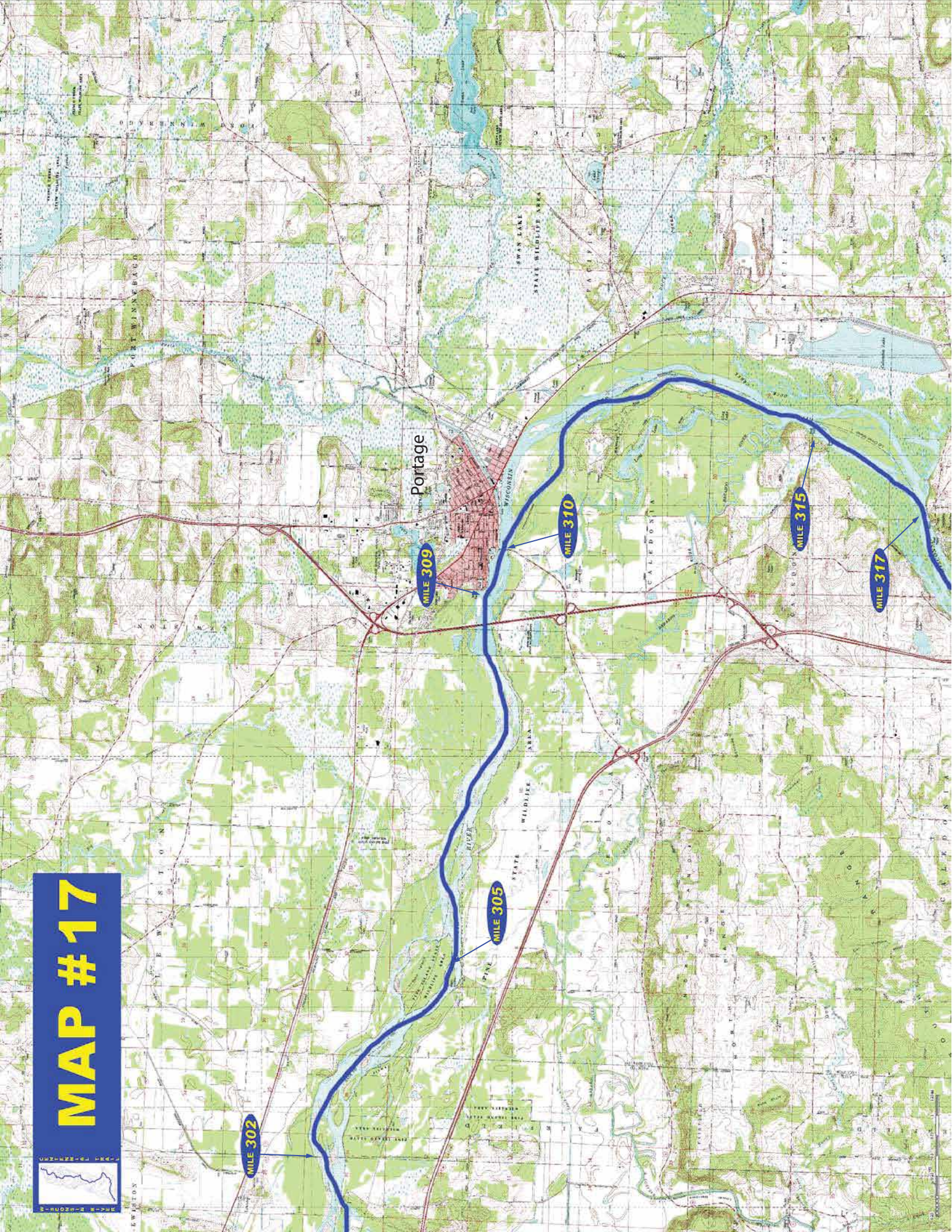
- Mile 284 – Private campground – “River Bay (608-254-7193)” (right) <http://www.dells-camping.com/>
 - Private campground – “Holiday Shores (608-254-2717)” (left) <http://www.holiday-shores.com>
- Sandbar camping is common but make sure the land is publicly owned and beware of changing water levels

➤ **Other amenities**

- Mile 288 through Mile 290 – Many businesses in Wisconsin Dells area <http://www.wisdells.com/> or www.dellschamber.com/ or www.wisconsin-dells.net/
- Mile 291 – River’s Edge Resort with canoe/kayak rentals and shuttles <http://www.riversedgeresort.com/>

➤ **Flow Information** – For information on river flow at Wisconsin Dells go to “Links” on the home page of this website and under “Wisconsin River Flow Forecasts” select “Wisconsin River at Wisconsin Dells”.

MAP #17



Portage

MILE 309

MILE 305

MILE 310

MILE 315

MILE 317

MILE 302

WISCONSIN RIVER CENTENNIAL TRAIL



MAP #17 – Pine Island Wildlife Area to Dekorra

➤ **General Description**

- Miles 302 – 310 (Pine Island Wildlife Area to Portage) River continues east through the Pine Island Wildlife Area to the city of Portage.
- Miles 310 – 317 (Portage to Dekorra) Many small tributaries enter the river behind islands forming many side channels. The Baraboo River, a major tributary enters from the west just upstream from Lib Cross Island.

Mile #	Landmark	Approximate hrs* from previous landmark
302	Pine Island Wildlife Area	
310	STH 33 bridge in Portage	2½
317	Dekorra	3

*Times vary depending on weather, river flow, and ability

➤ **Portages** - No portages on this stretch of river

➤ **Landings suitable for take-out or put-in**

- Mile 305 Pine Island boat landing (right)
- Mile 309 Sunset Park boat landing (left)
- Mile 315 Waterfront Rd. and Thunderbird Dr. boat accesses (right)
- Mile 317 Dekorra boat landing (left)

➤ **Camping**

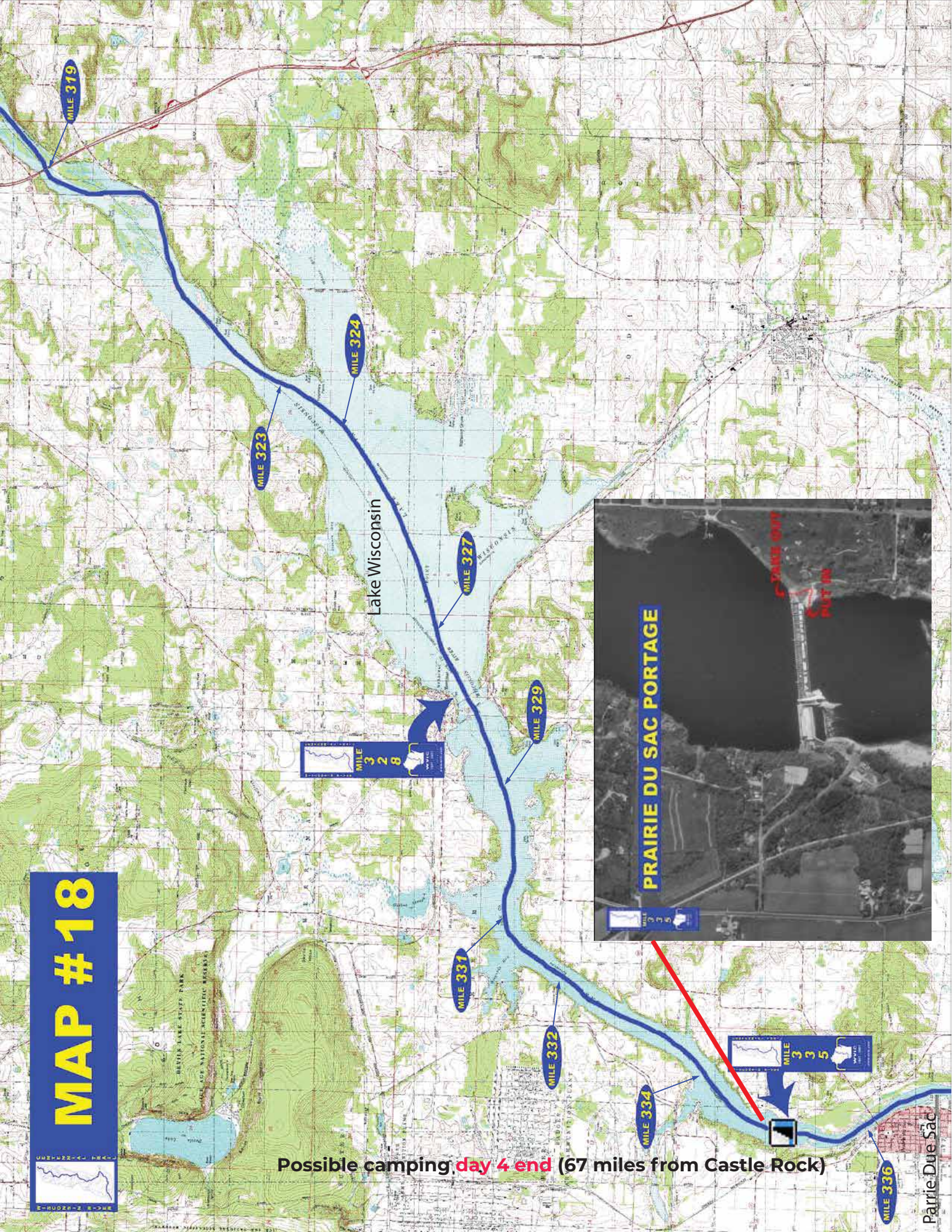
- Sandbar camping is common but make sure the land is publicly owned and beware of changing water levels

➤ **Other amenities**

- Mile 309 through Mile 311 – Many businesses in the city of Portage
<http://www.portagewi.com/> or www.ci.portage.wi.us/
- Mile 317 – Dekorra Park with picnic area and restrooms (left)
 - Dekorra Marina & Mart (608-635-4800) with private landing, canoe rentals and shuttles (left)

➤ **Flow Information** – For information on river flow at Wisconsin Dells go to “Links” on the home page of this website and under “Wisconsin River Flow Forecasts” select “Wisconsin River at Wisconsin Dells”.

MAP #18



Possible camping **day 4 end** (67 miles from Castle Rock)

WISCONSIN RIVER CENTENNIAL TRAIL



MAP #18 – Dekorra to Prairie du Sac

➤ **General Description**

- Miles 317 - 319 (Dekorra to I 90-94 bridge) St. Lawrence Bluff borders the east shore keeping the river fairly narrow until it passes under I 90-94 where shoreline development increases and the river widens as it approaches Lake Wisconsin
- Miles 319 – 328 (I 90-94 bridge to Merrimac) River broadens out into 9,500 acre Lake Wisconsin where waves from heavy recreational boat traffic and winds can create challenging conditions for canoeists
- Miles 328 – 335 (Merrimac to Prairie du Sac dam) Lake narrows at Merrimac the site of the car ferry crossing and continues southwest to the last dam on the Wisconsin River

Mile #	Landmark	Approximate hrs* from previous landmark
317	Dekorra	
319	I 90-94 bridge	¾
328	Merrimac	3
335	Prairie du Sac dam	2½

*Times vary depending on weather, river flow, and ability

➤ **Portages (see portage maps by clicking on the dam symbol)**

- Mile 335 Prairie du Sac dam – Take-out at some large concrete steps along a chain linked fence about 400' to the put-in immediately below the dam into a turbulent tailwater area where there can be dangerous standing waves depending on discharge (left)

➤ **Landings suitable for take-out or put-in**

- Mile 323 – Rest park boat landing (left)
 - Happy Hollow boat landing (left)
 - Tipperary Point public boat landing (left)
- Mile 324 Perry Camp Landing (left)
- Mile 327 Okee Bay boat landing (left)
- Mile 329 Lake Drive boat landing (left)
- Mile 331 Moon Valley boat landing (right)
- Mile 332 Sauk County public boat landing (right)

➤ **Camping**

- Mile 336 VFW – Veteran Memorial Park in Prairie du Sac with 25 camp sites

➤ **Other amenities**

- Mile 319 through Mile 335 – Many businesses on Lake Wisconsin <http://www.lakewisconsin.org>
- Mile 328 – Memorial Park with picnic area with shelter, playground, restrooms, accessible fishing pier and drinking water available
 - Businesses in the Town of Merrimac <http://www.tn.merrimac.wi.gov/> and Village of Merrimac <http://www.villageofmerrimac.org/> (right)
- Mile 336 – Veteran Memorial Park with boat landing, campground, picnic area with shelters, playground, restrooms and drinking water available on the eastside of the clubhouse (right)

Possible camping day 4 end (67 miles from Castle Rock)

- **Flow Information** – For information on river flow at Wisconsin Dells go to “Links” on the home page of this website and under “Wisconsin River Flow Forecasts” select “Wisconsin River at Wisconsin Dells”. For information on river flow below Prairie du Sac go to <http://alliantenergy.com/docs/groups/public/documents/pub/p012922.hcsp>

MAP #19



Spring Green Boat Launch #348
US-14, Spring Green, WI 53588



WISCONSIN RIVER CENTENNIAL TRAIL



MAP #s 19 through 23 – Lower Wisconsin State Riverway (LWSR)

- **WVIC was not allowed to place any Wisconsin River Centennial Trail mile marker signs in the LWSR.**

The 92 miles of the Wisconsin River from the Prairie du Sac Dam to the river's mouth is a wide, sandy stretch of free-flowing river that is well known for its scenic beauty and recreational value. In 1989 the State of Wisconsin formed the Lower Wisconsin State Riverway Board (LWSRB) to manage this area. The LWSRB has a website explaining the Lower Wisconsin River and its plans for managing the area. Information including "Riverway Unit Maps" are available on the LWSRB website. Click on the logo below to visit their site.

<http://lwr.state.wi.us/>



- **Flow Information** – For information on river flow below Prairie du Sac go to <http://alliantenergy.com/docs/groups/public/documents/pub/p012922.hcsp>

MAP #20

Buena Vista Boat Launch #373
33699 Oak St, Lone Rock, WI 53556

Lone Rock

Spring Green

Spring Green Boat Launch #350
US-14, Spring Green, WI 53588



MAP #21

Port Andrew Boat Landing #385
1100 US-14, Richland Center, WI 53581

Blue River

Muscoda

Avoca



MAP #22

Boat Ramp #392
US-61, Boscobel, WI 53805

Woodman Rec Area #398
15772 WI-133 Trunk, Woodman, WI 53827

Boscobel



MAP #23



Prarie Du Chien

END - Walusung Public Beach MILE 436
Water St, Bagley, WI 53801

